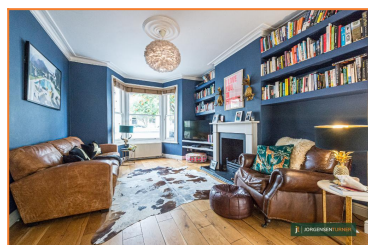


Vespan Road, Shepherd's Bush, London, W12

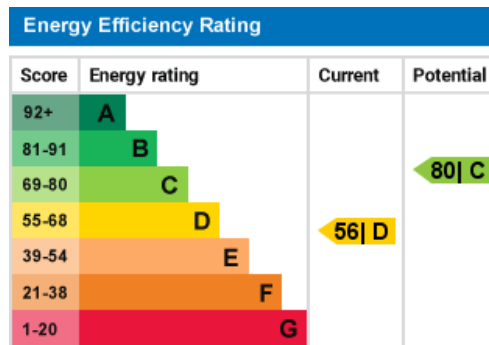
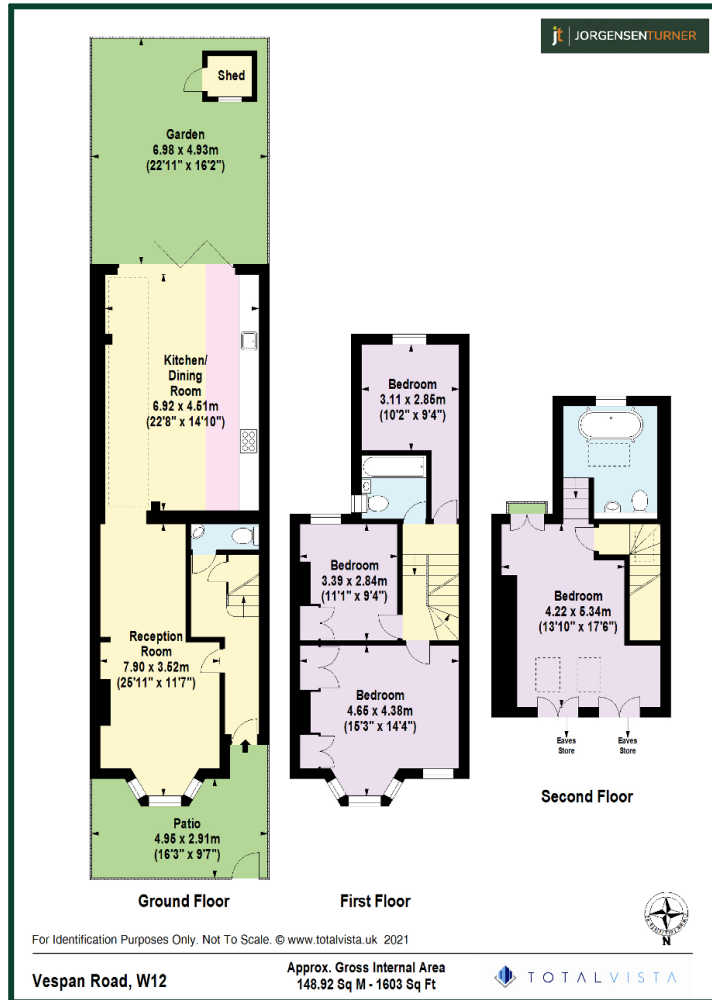


£1,250,000 Freehold

- BEAUTIFULLY PRESENTED FAMILY HOME
- TWO BATHROOMS (ONE EN-SUITE)
- IMPRESSIVE KITCHEN DINING ROOM
- CLOSE TO ASKEW ROAD
- FOUR BEDROOMS
- FULL LOFT CONVERSION WITH EN-SUITE
- SOUTH FACING REAR GARDEN
- WALKING DISTANCE TO WENDELL PARK

Vespan Road is a very desirable residential road located just off Percy Road. The location is extremely well served by a number of quality local independent shops, bars and restaurants on the Askew Road. The impressive Westfield shopping centre at White City is only a short walk away. The lovely open spaces of Wendell Park or Ravenscourt Park are also only a short walk away. Transport wise the location is served by a number of convenient bus routes along the Uxbridge Road and Askew Road. Tube wise the Hammersmith and City Line Tube, Central Line Tube and British Rail stations at Shepherds Bush are also within walking distance.

Vespan Road, Shepherd's Bush, London, W12



Viewing: For further information or to arrange a viewing please call us on the numbers below.

Disclaimer: These particulars are thought to be materially correct though their accuracy is not guaranteed and they do not form part of any contract. All measurements are approximate and we have not tested any fitted appliances, electrical or plumbing installation or central heating systems.