

Maurice Street, Shepherd's Bush, London, W12

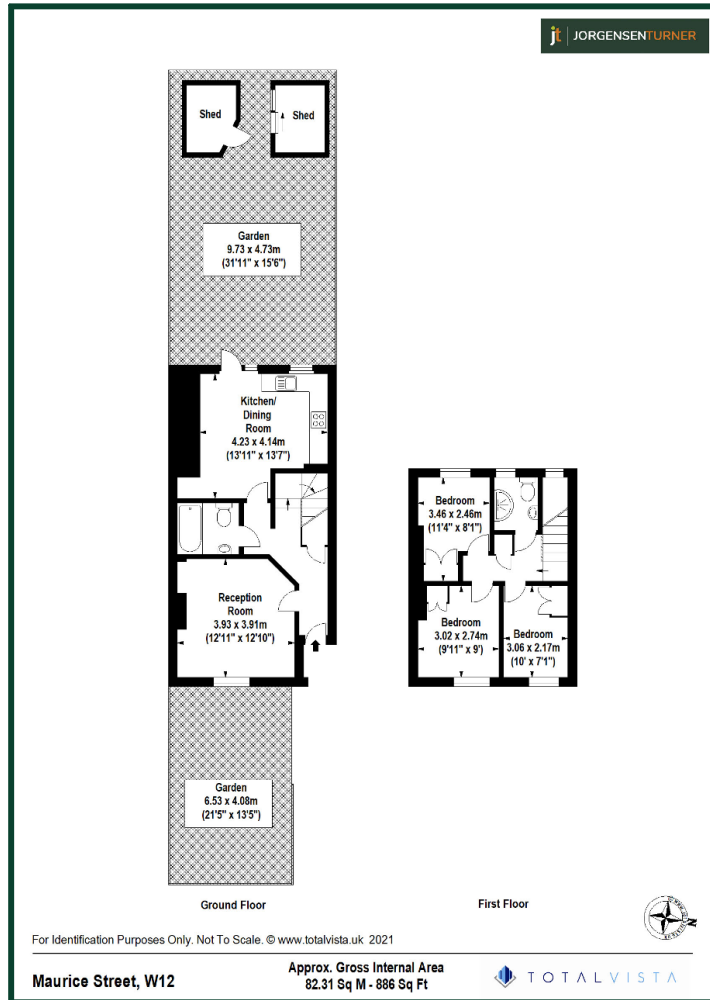


£580,000 Freehold

- THREE BEDROOMS
- 30FT REAR GARDEN
- EAST ACTON CENTRAL LINE TUBE
- CHAIN FREE
- EXTENDED TO THE REAR
- WHITE CITY CENTRAL LINE TUBE
- CLOSE TO WESTFIELD WHITE CITY
- FREEHOLD HOUSE

The property is well located within a short walk of both East Acton and White City tube stations on the Central Line offering easy access in to Central London. There are number of excellent bus routes to Ladbroke Grove or Shepherds Bush Green. Westfield White City is also only a short walk away, offering an abundance of shops and restaurants.

Maurice Street, Shepherd's Bush, London, W12



Energy Efficiency Rating			
Score	Energy rating	Current	Potential
92+	A		
81-91	B		88 B
69-80	C		
55-68	D	67 D	
39-54	E		
21-38	F		
1-20	G		

Viewing: For further information or to arrange a viewing please call us on the numbers below.

Disclaimer: These particulars are thought to be materially correct though their accuracy is not guaranteed and they do not form part of any contract. All measurements are approximate and we have not tested any fitted appliances, electrical or plumbing installation or central heating systems.

Shepherds Bush & Hammersmith Office

020 8740 8740

Queens Park & West Hampstead Office

020 7604 4040

www.jorgensenturner.com