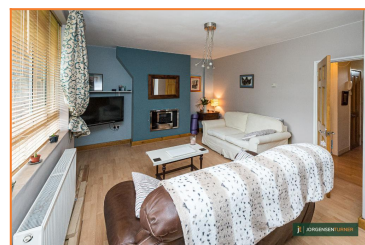
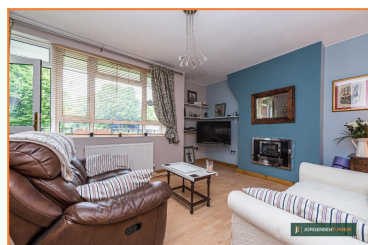


Australia Road, White City, London, W12

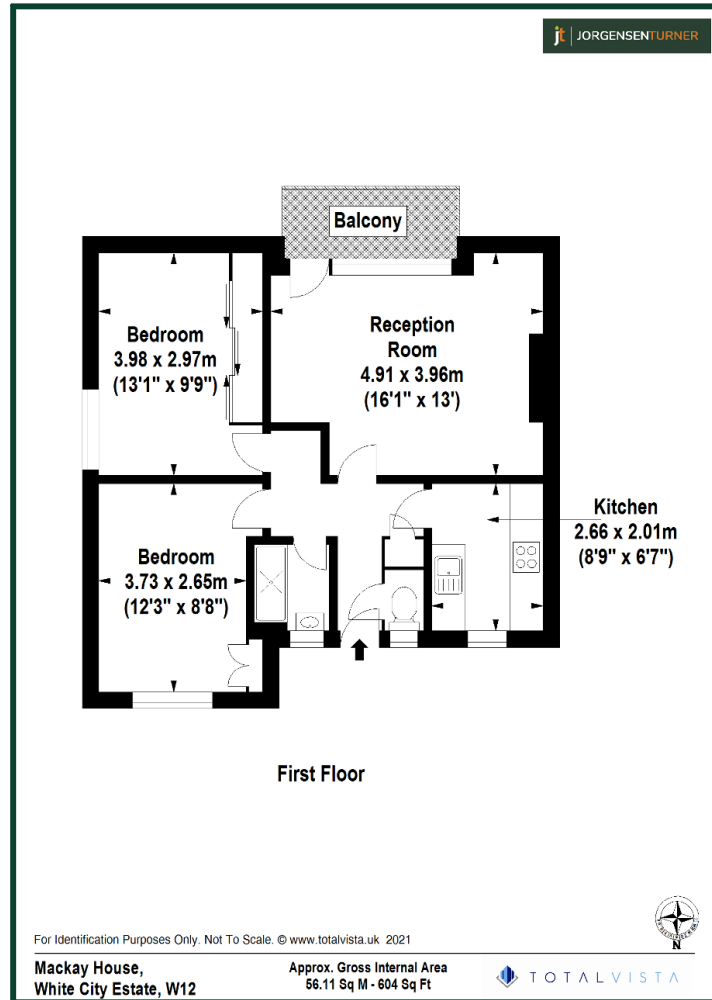


Guide Price £350,000 Leasehold

- PRIVATE BALCONY
- FIRST FLOOR FLAT
- WALKING DISTANCE TO WESTFIELD CENTRE
- WHITE CITY CENTRAL LINE TUBE
- TWO DOUBLE BEDROOMS
- EXCELLENT PROPORTIONS THROUGHOUT
- APPROX 600 SQ FT
- WALKING DISTANCE TO WORMHOLT PARK

Mackay House is located within a short walk from a wealth of shops, bars and restaurants in central Shepherds Bush or Westfield shopping centre. Transport wise, the location is extremely well served by the Central Line tube (White City), Hammersmith and City Line (Shepherds Bush Market) and a number of excellent bus routes from the Uxbridge Road or Wood Lane in to Central London. For the motorist, The A40 is only moments away from the property enabling easy reach out to the West of London and in to Central London.

Australia Road, White City, London, W12



Energy Efficiency Rating			
Score	Energy rating	Current	Potential
92+	A		
81-91	B		
69-80	C	70 C	78 C
55-68	D		
39-54	E		
21-38	F		
1-20	G		

Viewing: For further information or to arrange a viewing please call us on the numbers below.

Disclaimer: These particulars are thought to be materially correct though their accuracy is not guaranteed and they do not form part of any contract. All measurements are approximate and we have not tested any fitted appliances, electrical or plumbing installation or central heating systems.

Shepherds Bush & Hammersmith Office

020 8740 8740

Queens Park & West Hampstead Office

020 7604 4040

www.jorgensenturner.com