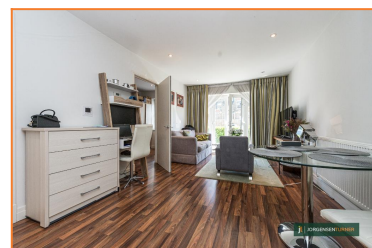


Havilland Mews, Shepherd's Bush, London, W12

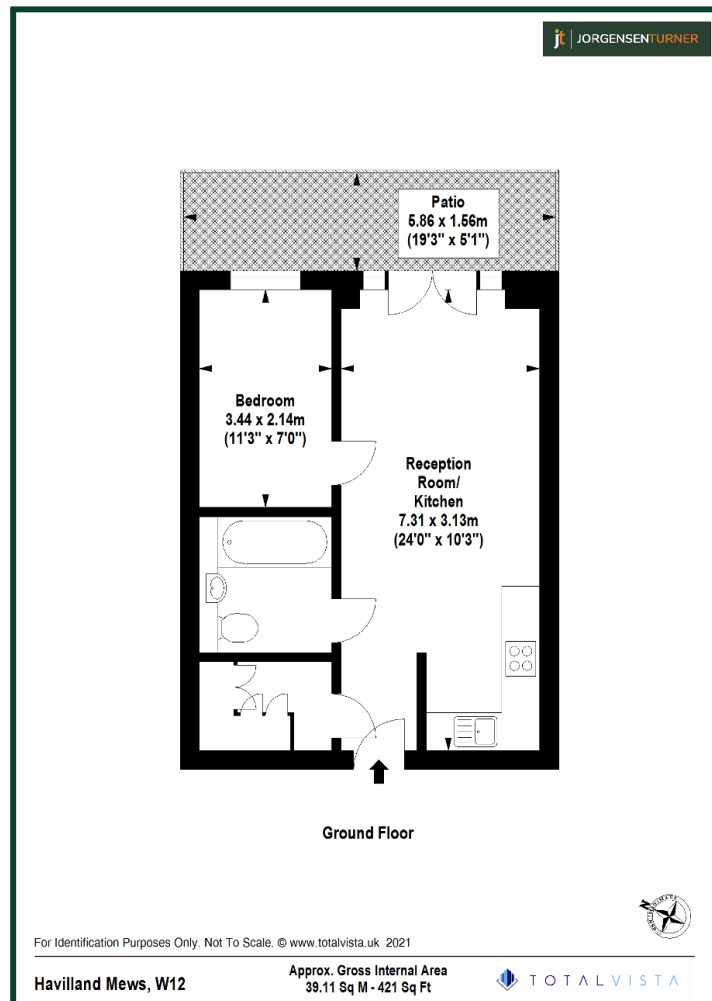


£395,000 Leasehold

- LUXURY GATED DEVELOPMENT
- PRIVATE PATIO AREA
- SPACIOUS OPEN PLAN RECEPTION ROOM
- CENTRAL LINE TUBE
- ONE DOUBLE BEDROOM
- PRIVATE PARKING
- CHAIN FREE
- HAMMERSMITH AND CITY LINE

Havilland Mews is perfectly located in central Shepherd's Bush. You are closely located to both Shepherd's Bush (Central Line) and Goldhawk Road (Hammersmith and City) Underground Stations. The abundant attractions of Westfield are close by as is the new White City House members club and hotel, part of the Soho House Group.

Havilland Mews, Shepherd's Bush, London, W12



Energy Efficiency Rating			
Score	Energy rating	Current	Potential
92+	A		
81-91	B	83 B	83 B
69-80	C		
55-68	D		
39-54	E		
21-38	F		
1-20	G		

Viewing: For further information or to arrange a viewing please call us on the numbers below.

Disclaimer: These particulars are thought to be materially correct though their accuracy is not guaranteed and they do not form part of any contract. All measurements are approximate and we have not tested any fitted appliances, electrical or plumbing installation or central heating systems.

Shepherds Bush & Hammersmith Office

020 8740 8740

Queens Park & West Hampstead Office

020 7604 4040

www.jorgensenturner.com