

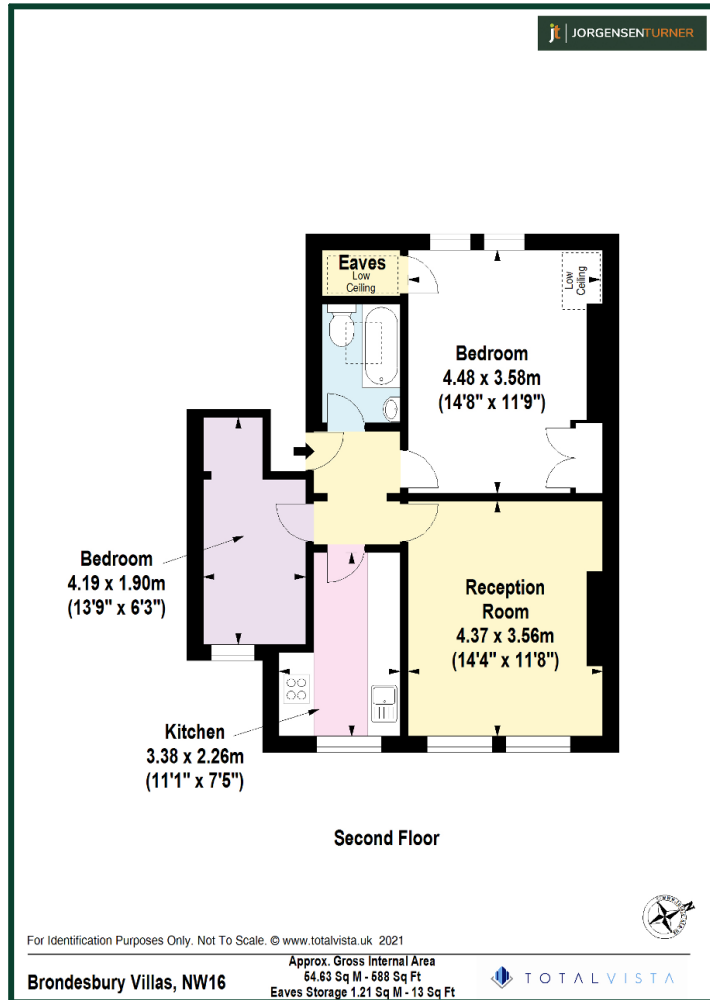
Brondesbury Villas, Queens Park, London, NW6



£557,500 Share of Freehold

- Lovely top floor conversion flat
- Bright and spacious accommodation
- Separate kitchen
- Short walk to Queens Park
- Preferred residential location
- Two double bedrooms
- Recently renovated bathroom
- Close to the Bakerloo line

Brondesbury Villas, Queens Park, London, NW6



Energy Efficiency Rating			
Score	Energy rating	Current	Potential
92+	A		
81-91	B		
69-80	C		
55-68	D	58 D	64 D
39-54	E		
21-38	F		
1-20	G		

Viewing: For further information or to arrange a viewing please call us on the numbers below.

Disclaimer: These particulars are thought to be materially correct though their accuracy is not guaranteed and they do not form part of any contract. All measurements are approximate and we have not tested any fitted appliances, electrical or plumbing installation or central heating systems.

Shepherds Bush & Hammersmith Office

020 8740 8740

Queens Park & West Hampstead Office

020 7604 4040

www.jorgensenturner.com