

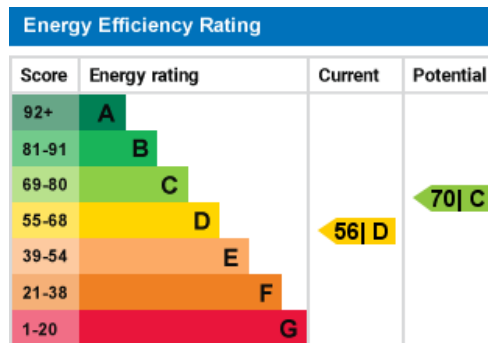
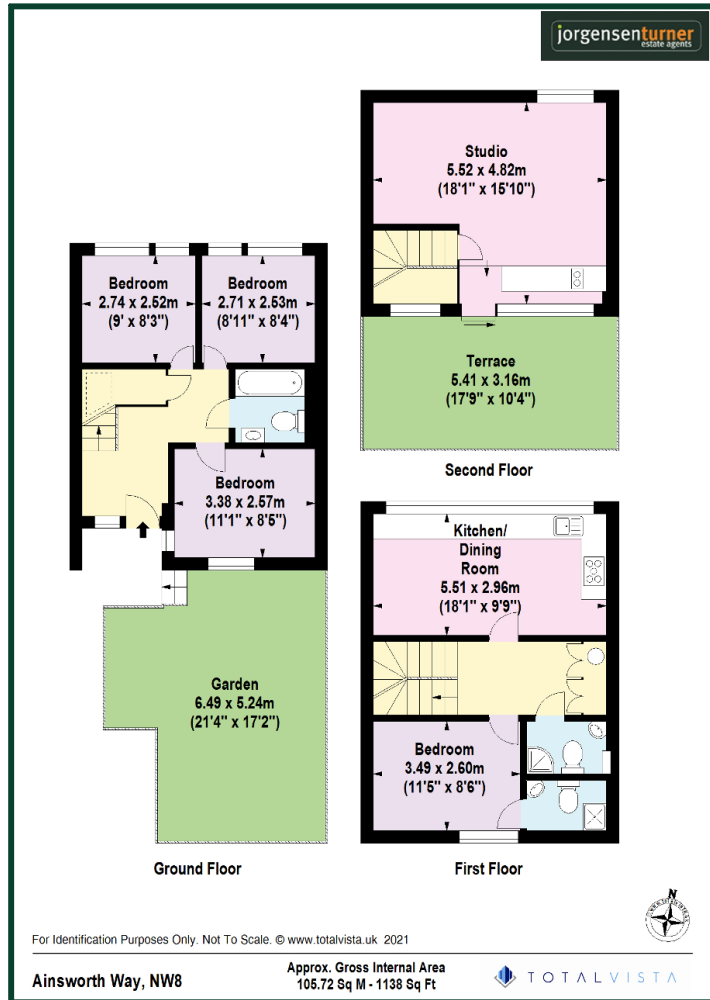
Ainsworth Way, London, NW8



£680,000 Leasehold

- Unusually spacious three storey property
- Reception room with roof terrace
- Offered with no onward chain
- Ideal investment property
- Four double bedrooms and three bathrooms
- 100 years remaining on the lease
- Smart modern kitchen
- Fantastic location

Ainsworth Way, London, NW8



Viewing: For further information or to arrange a viewing please call us on the numbers below.

Disclaimer: These particulars are thought to be materially correct though their accuracy is not guaranteed and they do not form part of any contract. All measurements are approximate and we have not tested any fitted appliances, electrical or plumbing installation or central heating systems.

Shepherds Bush & Hammersmith Office

020 8740 8740

Queens Park & West Hampstead Office

020 7604 4040

www.jorgensenturner.com