

Stowe Road, Shepherds Bush, London, W12

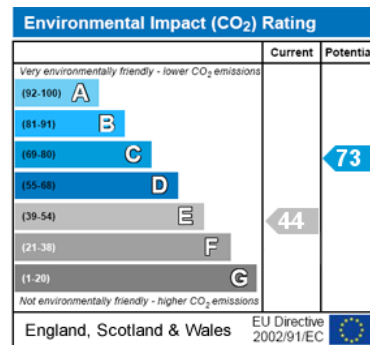
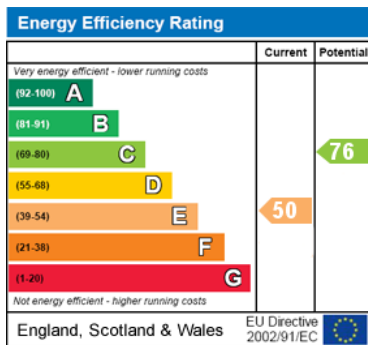
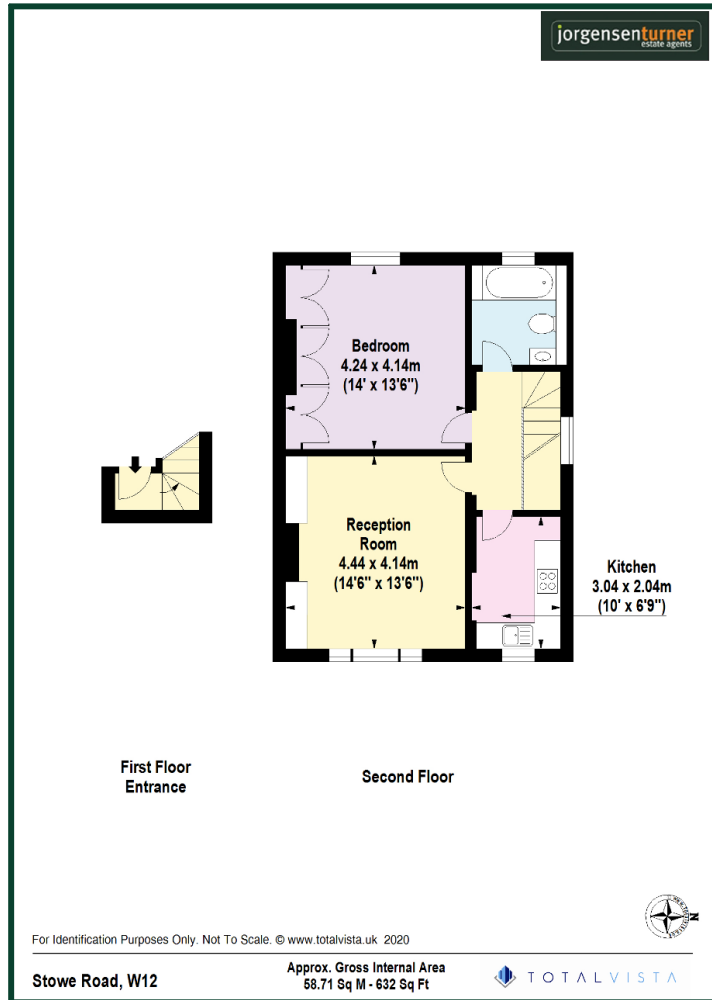


£465,000 Share of Freehold

- CHAIN FREE
- ATTRACTIVE PERIOD BUILDING
- SECOND FLOOR FLAT
- EXCELLENT NATURAL LIGHT
- APPROX 630 SQ FT
- PRIME RESIDENTIAL ROAD
- IMPRESSIVE RECEPTION ROOM
- SHARE OF FREEHOLD

Stowe Road is an attractive residential road located just off the Goldhawk Road offering easy access to all the amenities along the Goldhawk Road, the Westfield Shopping Centre at White City or Hammersmith Grove. The location has fantastic transport links with a number of convenient buses running from either the Goldhawk Road or the Uxbridge Roads. There are also a number of tubes within the immediate area with the Hammersmith and City Line on Goldhawk Road, the Central Line station at Shepherds Bush or the British Rail station at Shepherds Bush. For recreational use the lovely open spaces of Ravenscourt Park are only a short walk away.

Stowe Road, Shepherds Bush, London, W12



Viewing: For further information or to arrange a viewing please call us on the numbers below.

Disclaimer: These particulars are thought to be materially correct though their accuracy is not guaranteed and they do not form part of any contract. All measurements are approximate and we have not tested any fitted appliances, electrical or plumbing installation or central heating systems.

Shepherds Bush and Hammersmith Office ● Queens Park and West Hampstead Office

020 8740 8740

020 7604 4040

www.jorgensenturner.com

