

Coningham Road, Shepherds Bush, London, W12

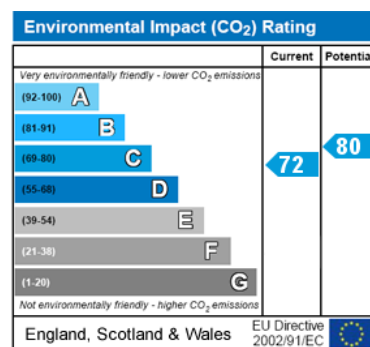
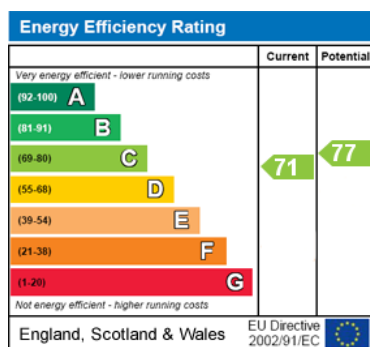
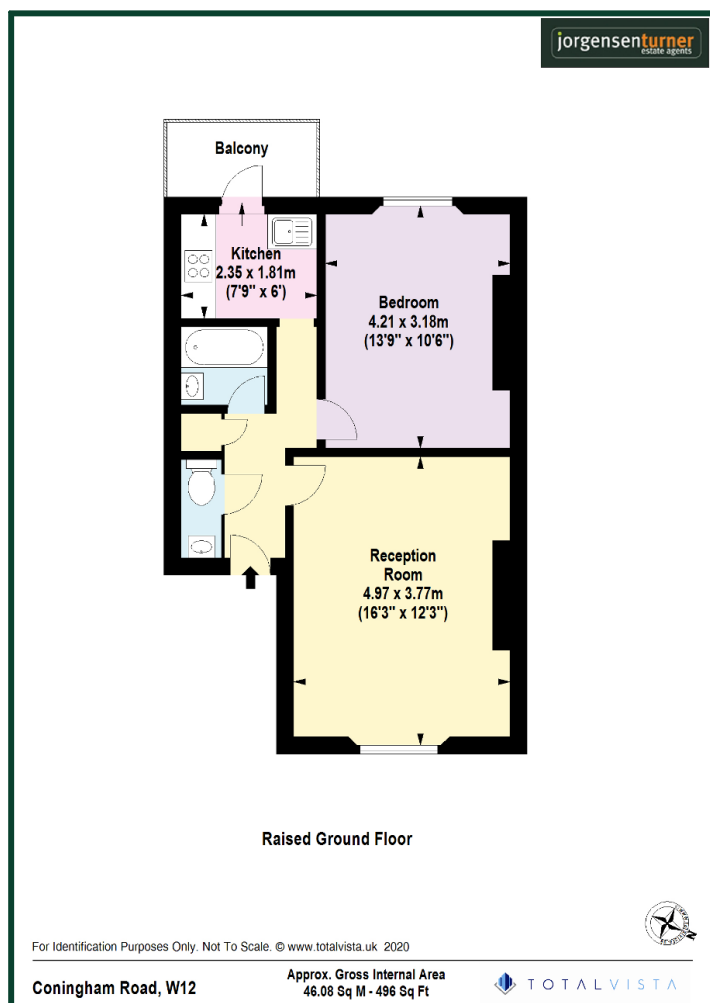


£430,000 Share of Freehold

- HIGH CEILINGS
- ONE DOUBLE BEDROOM
- PRIVATE BALCONY
- EXCELLENT NATURAL LIGHT
- RECENTLY REFURBISHED
- WOOD FLOORING
- SHARE OF FREEHOLD
- RAISED GROUND FLOOR FLAT

Coningham Road offers super convenience for all the amenities on offer in either Shepherds Bush or Hammersmith. The property is only a short walk away from the apartment from an abundance of independent shops, bars and restaurants on either the vibrant Goldhawk or the Uxbridge Roads. The Westfield Shopping Centre is also within walking distance offering a multitude of retail experiences. Transport wise there are a number of excellent links at either Shepherds Bush Market or Goldhawk Road (Hammersmith and City Line), Shepherds Bush (Central Line) and the Shepherds Bush British Rail station. Bus wise the 94 bus route runs from the end of Coningham road in to the West End and towards Chiswick.

Coningham Road, Shepherds Bush, London, W12



Viewing: For further information or to arrange a viewing please call us on the numbers below.

Disclaimer: These particulars are thought to be materially correct though their accuracy is not guaranteed and they do not form part of any contract. All measurements are approximate and we have not tested any fitted appliances, electrical or plumbing installation or central heating systems.

Shepherds Bush and Hammersmith Office ● Queens Park and West Hampstead Office

020 8740 8740

020 7604 4040

www.jorgensenturner.com

