

Hillsborough Court, Mortimer Crescent, NW6

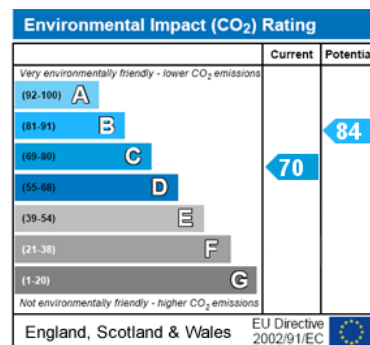
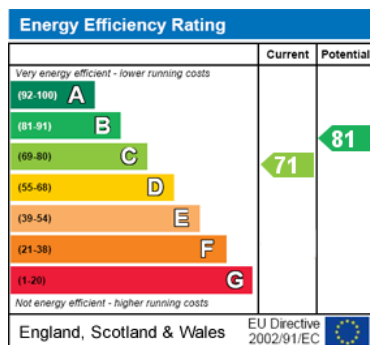
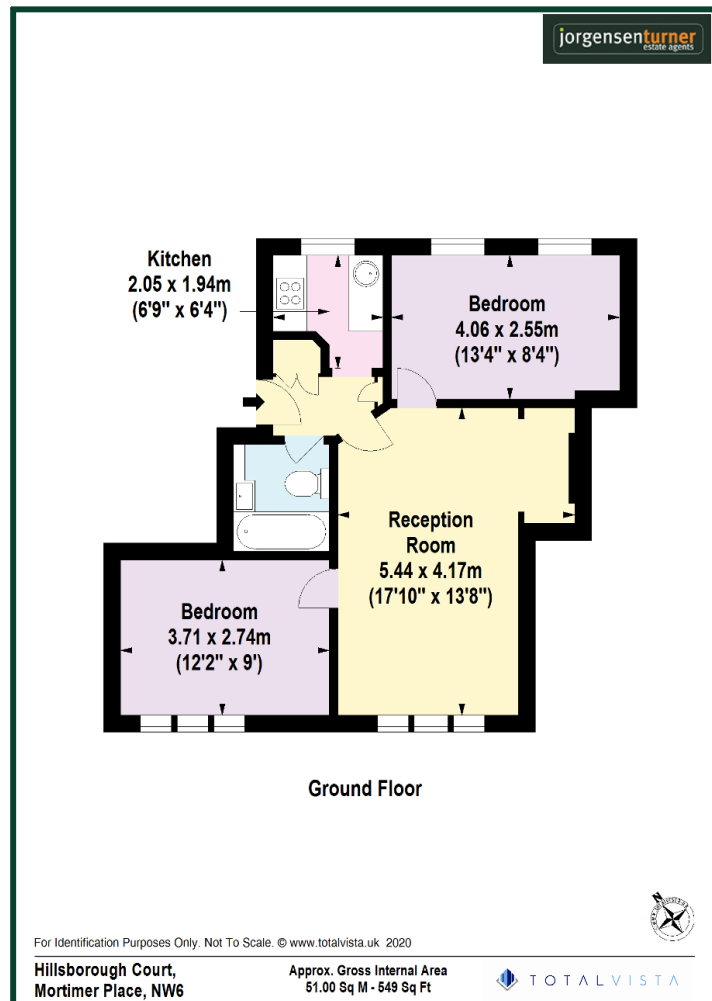


£370,000 Leasehold

- Immaculately presented two bedroom flat
- Situated in a period purpose built block
- Portered block
- Active Resident's Association
- Two good size double bedrooms
- 164 years remaining on the lease
- Close to multiple transport routes
- Good value for the immediate area

The building is nestled in the corner of Mortimer Crescent and is therefore extremely accessible to multiple transport options from Kilburn, St Johns Wood and West Hampstead as well as being a short stroll from Paddington Rec in Maida Vale

Hillsborough Court, Mortimer Crescent, NW6



Viewing: For further information or to arrange a viewing please call us on the numbers below.

Disclaimer: These particulars are thought to be materially correct though their accuracy is not guaranteed and they do not form part of any contract. All measurements are approximate and we have not tested any fitted appliances, electrical or plumbing installation or central heating systems.

Shepherds Bush and Hammersmith Office ● Queens Park and West Hampstead Office

020 8740 8740

020 7604 4040

www.jorgensenturner.com

