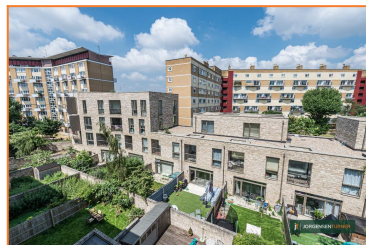
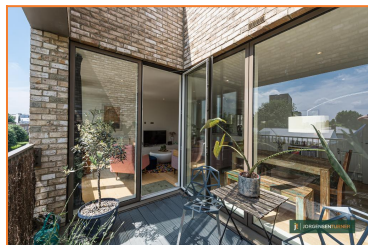
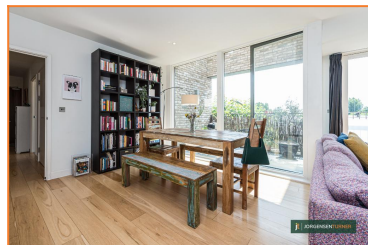


Chichester Road, North Maida Vale, London, NW6



Offers Over £850,000 Leasehold

- Stunning modern Flat
- Abundance of natural light
- Three bedrooms and two bathrooms
- Lease in excess of 990 years
- Well considered layout and space
- Large South facing terrace
- Close to Kilburn Park Bakerloo line
- Resident Parking Permits available

Shepherds Bush & Hammersmith Office

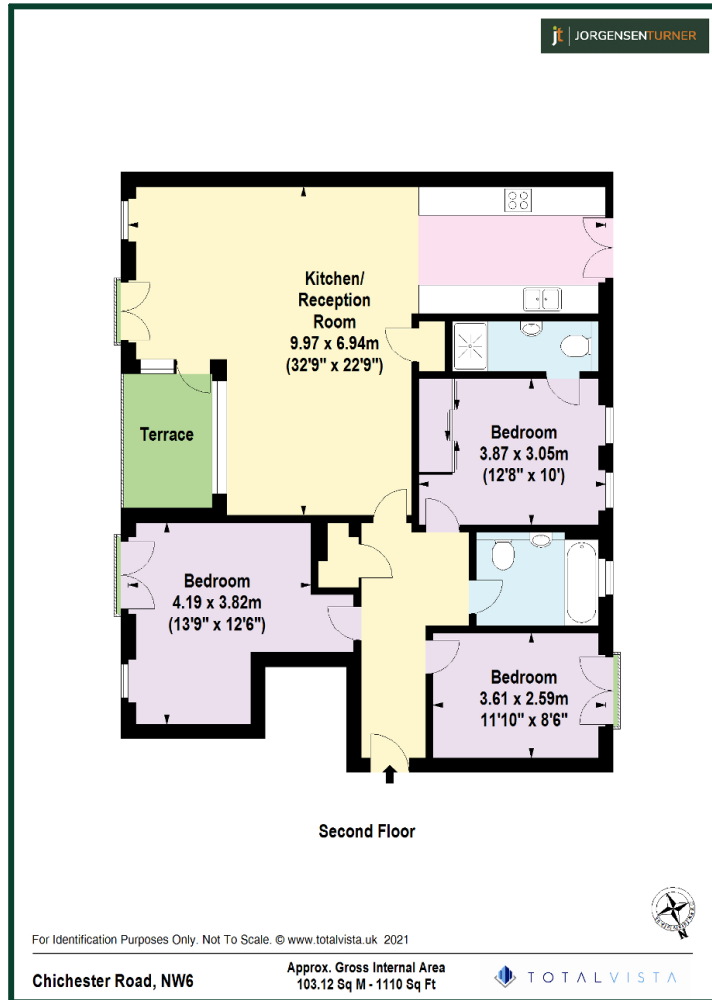
020 8740 8740

Queens Park & West Hampstead Office

020 7604 4040

www.jorgensenturner.com

Chichester Road, North Maida Vale, London, NW6



Energy Efficiency Rating			
Score	Energy rating	Current	Potential
92+	A		
81-91	B	81 B	81 B
69-80	C		
55-68	D		
39-54	E		
21-38	F		
1-20	G		

Viewing: For further information or to arrange a viewing please call us on the numbers below.

Disclaimer: These particulars are thought to be materially correct though their accuracy is not guaranteed and they do not form part of any contract. All measurements are approximate and we have not tested any fitted appliances, electrical or plumbing installation or central heating systems.

Shepherds Bush & Hammersmith Office

020 8740 8740

Queens Park & West Hampstead Office

020 7604 4040

www.jorgensenturner.com