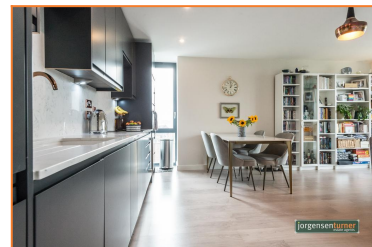


**Bloemfontein Road, Shepherds Bush, London, W12**

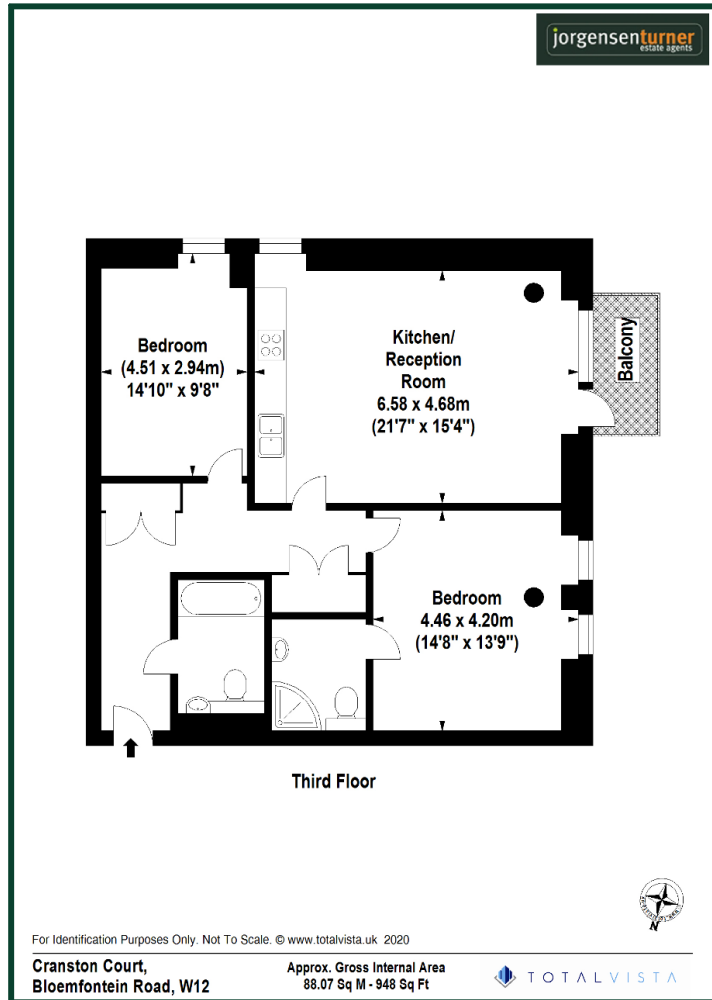


**£625,000 Leasehold**

- PRIVATE BALCONY
- TWO DOUBLE BEDROOMS
- APPROX 948 SQ FT
- GATED UNDERGROUND PARKING
- VIEWS OVER WORMHOLT PARK
- EN-SUITE BATHROOM
- THIRD FLOOR APARTMENT
- WALKING DISTANCE TO SOHO HOUSE

Cranston court is a luxury development located within a short walk from a wealth of shops, bars and restaurants in central Shepherds Bush or the Westfield shopping centre at White City. Transport wise the location is extremely well served by the Central Line tube (White City), Hammersmith and City Line (Shepherds Bush Market) and a number of excellent bus routes from the Uxbridge Road or Wood Lane in to Central London. For recreational use you have wonderful views over the lovely open spaces of Wormholt Park, which is situated to the rear of the apartment. For the motorist, The A40 is only a moment from the property enabling easy reach out to the West of London and in to Central London.

# Bloemfontein Road, Shepherds Bush, London, W12



Energy Efficiency Rating			
Score	Energy rating	Current	Potential
92+	A		
81-91	B	86   B	86   B
69-80	C		
55-68	D		
39-54	E		
21-38	F		
1-20	G		

**Viewing:** For further information or to arrange a viewing please call us on the numbers below.

**Disclaimer:** These particulars are thought to be materially correct though their accuracy is not guaranteed and they do not form part of any contract. All measurements are approximate and we have not tested any fitted appliances, electrical or plumbing installation or central heating systems.

Shepherds Bush & Hammersmith Office

020 8740 8740

Queens Park & West Hampstead Office

020 7604 4040

[www.jorgensenturner.com](http://www.jorgensenturner.com)