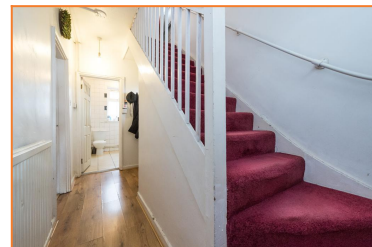
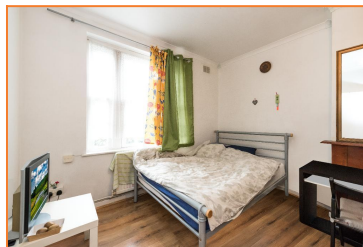


## The Curve, Shepherds Bush, London, W12

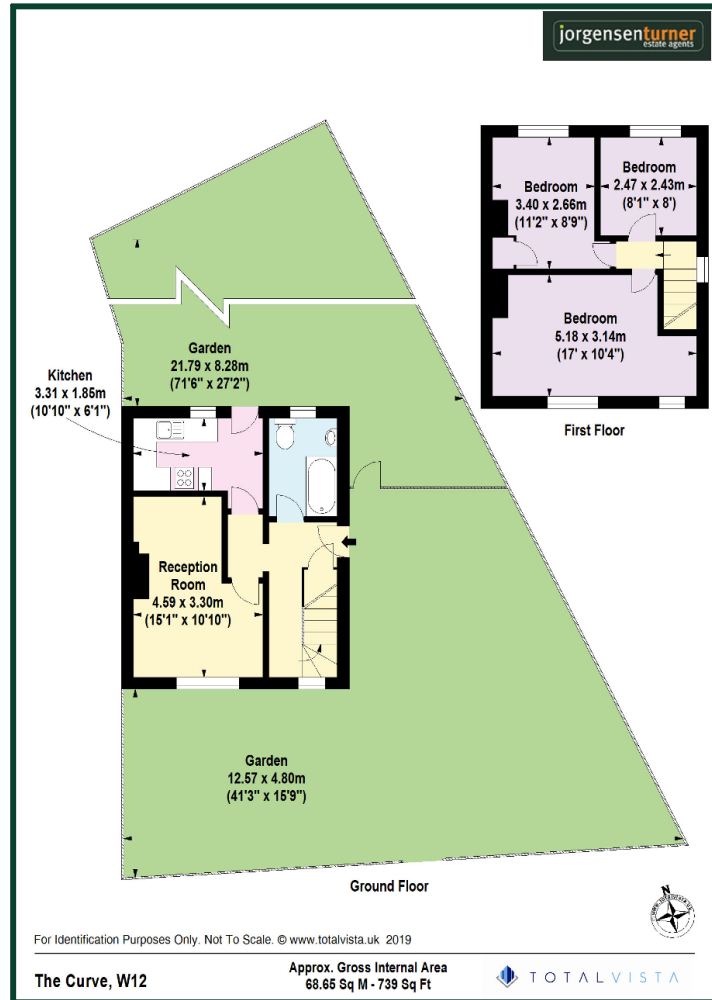


### £655,000 Freehold

- THREE BEDROOMS
- IN NEED OF MODERNISATION
- CHAIN FREE
- EXCELLENT TRANSPORT LINKS
- REAR GARDEN OF APPROX 70FT
- END OF TERRACE
- CLOSE TO THE WESTFIELD CENTRE
- CENTRAL LINE TUBE

The Curve is in a quiet residential street within easy access to East Acton Central Line Tube and numerous bus routes on the Uxbridge Road in to Central London. For recreational use the lovely open spaces of Wormholt Park are only a short walk away. For the motorist the A40 is within 1/2 mile enabling easy access in and out of Central London.

# The Curve, Shepherds Bush, London, W12



Energy Efficiency Rating		Current	Potential
Very energy efficient - lower running costs			
(92-100) <b>A</b>			
(81-91) <b>B</b>			
(69-80) <b>C</b>			
(55-68) <b>D</b>		<b>68</b>	<b>75</b>
(39-54) <b>E</b>			
(21-38) <b>F</b>			
(1-20) <b>G</b>			
Not energy efficient - higher running costs			
England, Scotland & Wales		EU Directive 2002/91/EC	

Environmental Impact (CO <sub>2</sub> ) Rating		Current	Potential
Very environmentally friendly - lower CO <sub>2</sub> emissions			
(92-100) <b>A</b>			
(81-91) <b>B</b>			
(69-80) <b>C</b>			
(55-68) <b>D</b>		<b>63</b>	<b>71</b>
(39-54) <b>E</b>			
(21-38) <b>F</b>			
(1-20) <b>G</b>			
Not environmentally friendly - higher CO <sub>2</sub> emissions			
England, Scotland & Wales		EU Directive 2002/91/EC	

**Viewing:** For further information or to arrange a viewing please call us on the numbers below.

**Disclaimer:** These particulars are thought to be materially correct though their accuracy is not guaranteed and they do not form part of any contract. All measurements are approximate and we have not tested any fitted appliances, electrical or plumbing installation or central heating systems.

Shepherds Bush & Hammersmith Office

020 8740 8740

Queens Park & West Hampstead Office

020 7604 4040

[www.jorgensenturner.com](http://www.jorgensenturner.com)