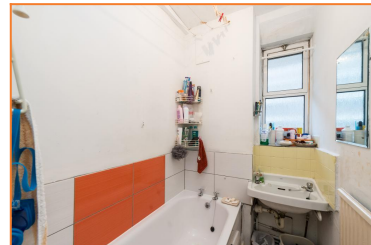


## Australia Road, White City, London, W12

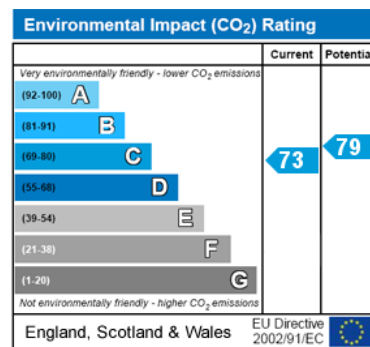
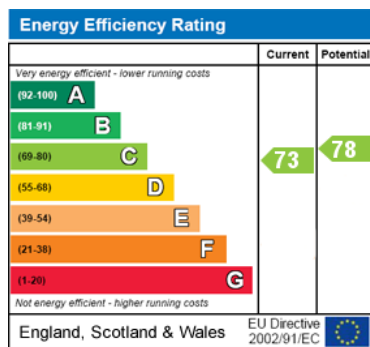


### £375,000 Leasehold

- THREE DOUBLE BEDROOMS
- FIRST FLOOR APARTMENT
- WALKING DISTANCE TO WHITE CITY TUBE
- CHAIN FREE
- GREAT INVESTMENT OR FIRST TIME BUY
- IN NEED OF SOME MODERNISATION
- CLOSE TO THE WESTFIELD CENTRE
- SPACIOUS RECEPTION ROOM

Champlain House is located within a short walk from a wealth of shops, bars and restaurants in central Shepherds Bush or Westfield shopping centre. Transport wise, the location is extremely well served by the Central Line tube (White City), Hammersmith and City Line (Shepherds Bush Market) and a number of excellent bus routes from the Uxbridge Road or Wood Lane in to Central London. For the motorist, The A40 is only moments away from the property enabling easy reach out to the West of London and in to Central

# Australia Road, White City, London, W12



**Viewing:** For further information or to arrange a viewing please call us on the numbers below.

**Disclaimer:** These particulars are thought to be materially correct though their accuracy is not guaranteed and they do not form part of any contract. All measurements are approximate and we have not tested any fitted appliances, electrical or plumbing installation or central heating systems.

Shepherds Bush and Hammersmith Office ● Queens Park and West Hampstead Office

020 8740 8740

020 7604 4040

www.jorgensenturner.com

