

## Godolphin Road, Shepherds Bush, London, W12

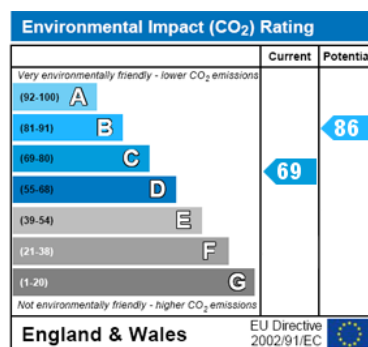
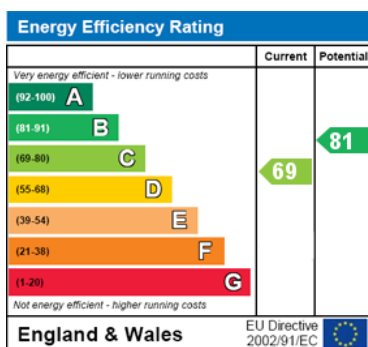
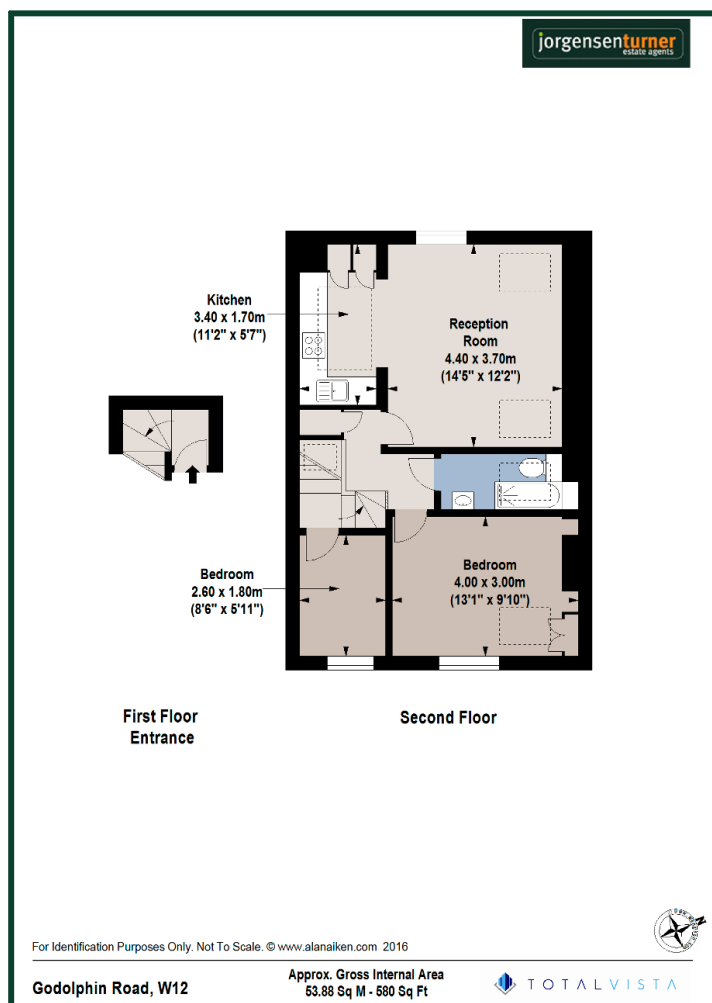


### £470,000 Share of Freehold

- Attractive period conversion
- Two bedrooms
- Approx 580 sq ft
- Close Hammersmith and City Line tube
- Top Floor Flat
- Set over two floors
- Located just off Goldhawk Road
- Close to Central Line tube

Godolphin Road is an extremely sought after residential road running between Uxbridge and Goldhawk Road. The location offers an abundance of local shops, bars and restaurants along the Uxbridge Road and Goldhawk Road, plus the nearby expansive Westfield shopping center offers every store you could wish for. For schools the property is within walking distance to Latymer, Godolphin and St Paul's independent schools as well as St Stephens and Miles Coverdale primary schools. Transport wise there are conveniently located tubes nearby with Goldhawk Road and Shepherds Bush Market stations (Hammersmith and City Line), Shepherds Bush (Central Line), Shepherds Bush (British Rail) stations. The lovely open spaces of Hammersmith Park or Ravenscourt Park are only a short walk away.

# Godolphin Road, Shepherds Bush, London, W12



**Viewing:** For further information or to arrange a viewing please call us on the numbers below.

**Disclaimer:** These particulars are thought to be materially correct though their accuracy is not guaranteed and they do not form part of any contract. All measurements are approximate and we have not tested any fitted appliances, electrical or plumbing installation or central heating systems.

Shepherds Bush and Hammersmith Office ● Queens Park and West Hampstead Office

020 8740 8740

020 7604 4040

[www.jorgensenturner.com](http://www.jorgensenturner.com)

