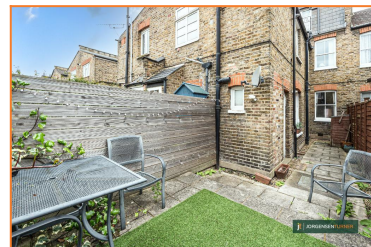
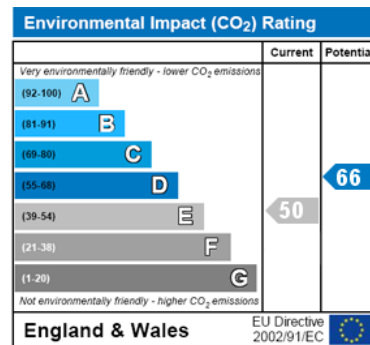
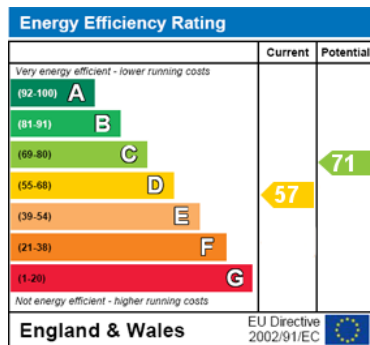
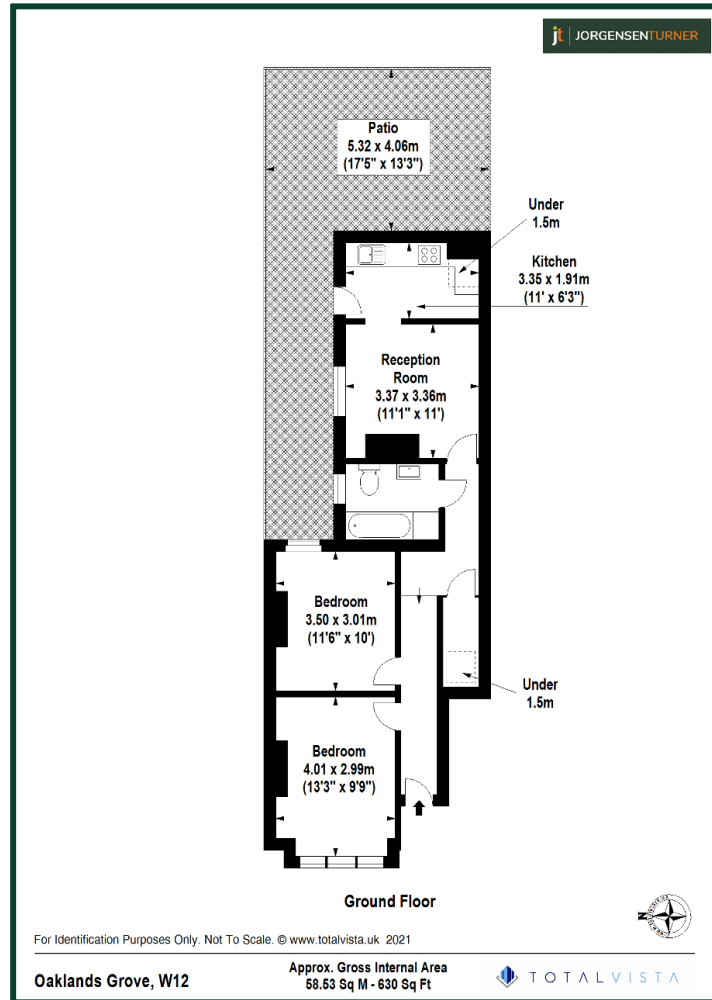


Oaklands Grove, Shepherds Bush, London, W12**£530,000 Share of Freehold**

- PRIVATE REAR GARDEN
- SHARE OF FREEHOLD
- CHAIN FREE
- PRIVATE FRONT DOOR
- TWO DOUBLE BEDROOMS
- APPROX 630 SQ FT
- WOOD FLOORING
- WALKING DISTANCE TO SOHO HOUSE

The location is well served by a number of excellent independent shops, coffee shops (Proud Mary's), bars and pubs (Princess Victoria) along the Uxbridge Road. Transport wise the property is well served by the Central Line (White City & Shepherds Bush), the Circle Line & Hammersmith & City Line (Shepherds Bush Market and Wood Lane) and London Overground (Shepherds Bush). The Westfield shopping centre is also only a short walk away from the property offering every retail store you could wish for. For the motorist the A4 and A40 are close by for easy access out to the West and North West of London.

Oaklands Grove, Shepherds Bush, London, W12



Viewing: For further information or to arrange a viewing please call us on the numbers below.

Disclaimer: These particulars are thought to be materially correct though their accuracy is not guaranteed and they do not form part of any contract. All measurements are approximate and we have not tested any fitted appliances, electrical or plumbing installation or central heating systems.

Shepherds Bush & Hammersmith Office

020 8740 8740

Queens Park & West Hampstead Office

020 7604 4040

www.jorgensenturner.com