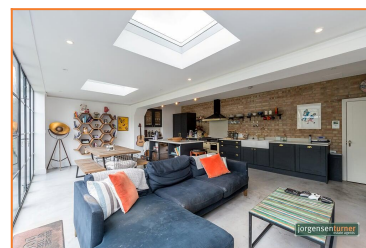
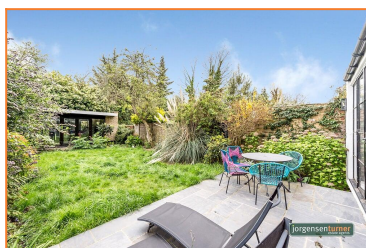


## Brondesbury Villas, Queens Park, NW6

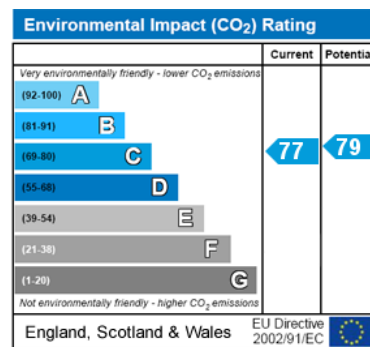
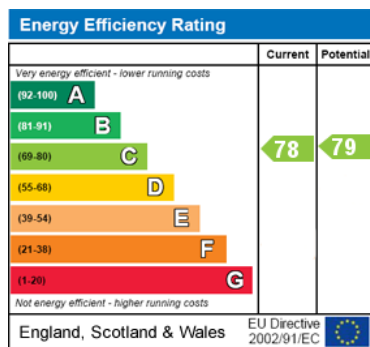
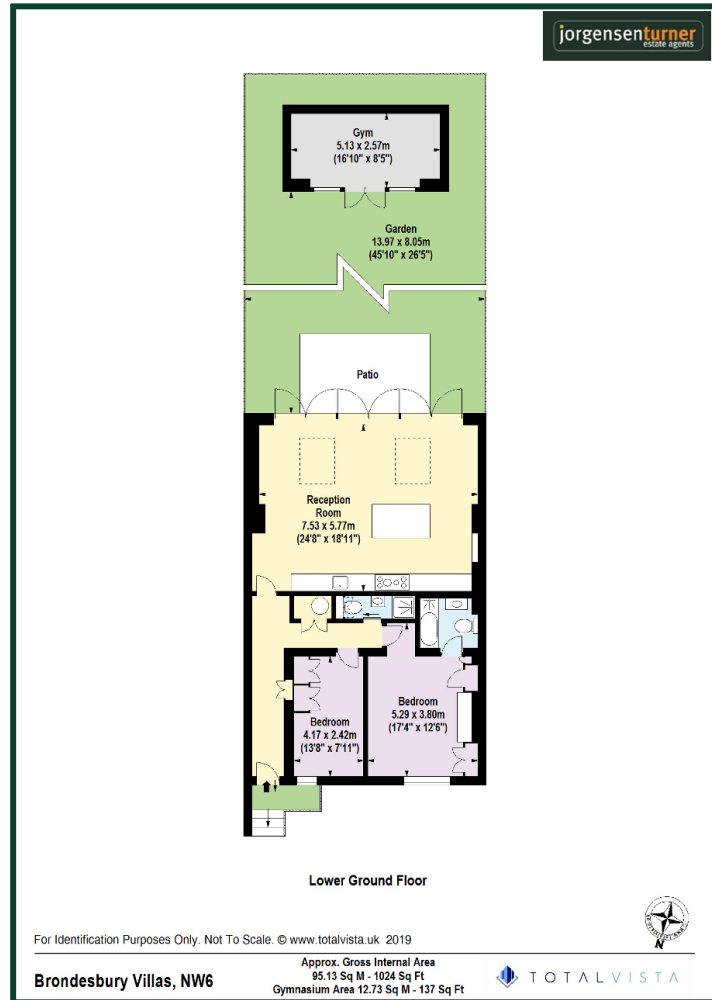


### Offers in Excess of £850,000 Share of Freehold

- Share of freehold 900+year lease
- South / West facing large Garden
- Two double bedrooms
- Underfloor zoned heating
- Chain free
- Completely refurbished to exacting level
- Two bathrooms (one ensuite)
- Victorian conversion with period entry

Queens Park's Salusbury Road has something to offer everyone. Restaurants include 'Michiko Sushino' for sushi lovers, and great quality gastro pub food at 'The Alice House' or 'The Salusbury', which also has its own deli next door selling all the fresh produce and ingredients used in the kitchens next door. Queens Park has a selection of artisan bakeries, deli cafes and coffee shops, and bookshop as well as the famous weekly Farmers Market. There are also a selection of boutique shops, hair and beauty salons, florists and much more.

# Brondesbury Villas, Queens Park, NW6



**Viewing:** For further information or to arrange a viewing please call us on the numbers below.

**Disclaimer:** These particulars are thought to be materially correct though their accuracy is not guaranteed and they do not form part of any contract. All measurements are approximate and we have not tested any fitted appliances, electrical or plumbing installation or central heating systems.

Shepherds Bush and Hammersmith Office ● Queens Park and West Hampstead Office

020 8740 8740

020 7604 4040

www.jorgensenturner.com

