

# Fifth Avenue, Queens Park, London, W10

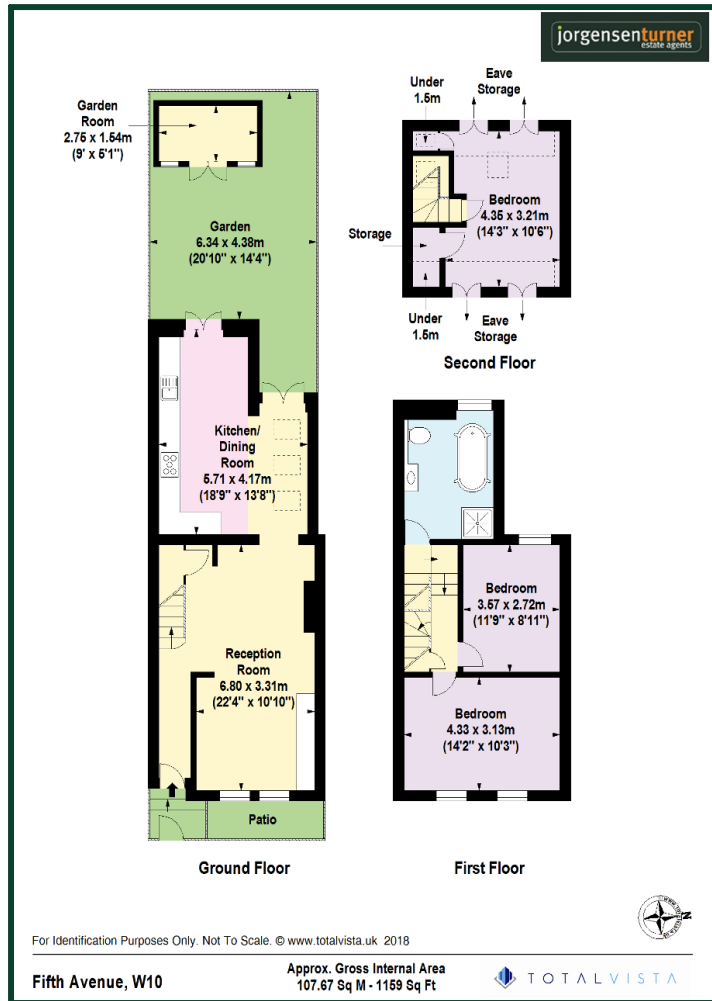


## £995,000 Freehold

- ● MODERN VICTORIAN COTTAGE
- ● WEST FACING GARDEN
- ● LARGE KITCHEN DINER
- ● PERIOD FEATURES THROUGHOUT
- ● THREE DOUBLE BEDROOMS
- ● DOUBLE RECEPTION ROOM
- ● STUNNING INTERIOR
- ● CATCHMENT AREA FOR SCHOOLS

Located in the Queens Park conservation area or "The Avenues" as it's known to locals, this house is easily accessible to the delights of the famous Portobello Road Notting Hill, Ladbroke Grove and Paddington via the cycle path. There is an array of boutique shops and bars near by, yoga and dance studios, a farmers market on Sundays, as well as a green open space for residents, a primary school and a residents association. The area is also located in an up and coming leafy part of London, which will benefit from the proximity to the HS2 stations at Old Oak Common interchange and Paddington Station.

# Fifth Avenue, Queens Park, London, W10



**Viewing:** For further information or to arrange a viewing please call us on the numbers below.

**Disclaimer:** These particulars are thought to be materially correct though their accuracy is not guaranteed and they do not form part of any contract. All measurements are approximate and we have not tested any fitted appliances, electrical or plumbing installation or central heating systems.

Shepherds Bush and Hammersmith Office ● Queens Park and West Hampstead Office

020 8740 8740

020 7604 4040

www.jorgensenturner.com

