

St Ann's Road, Holland Park, London, W11

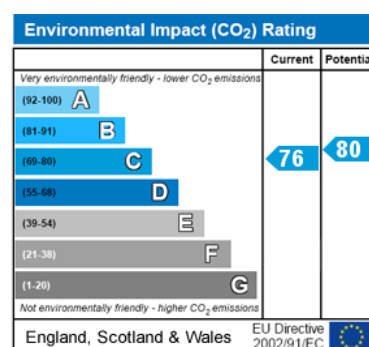
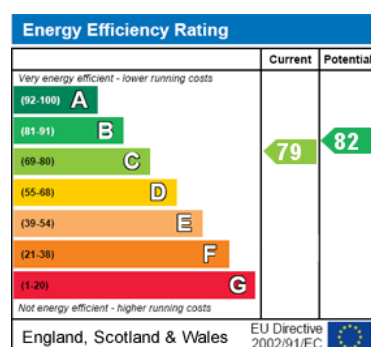
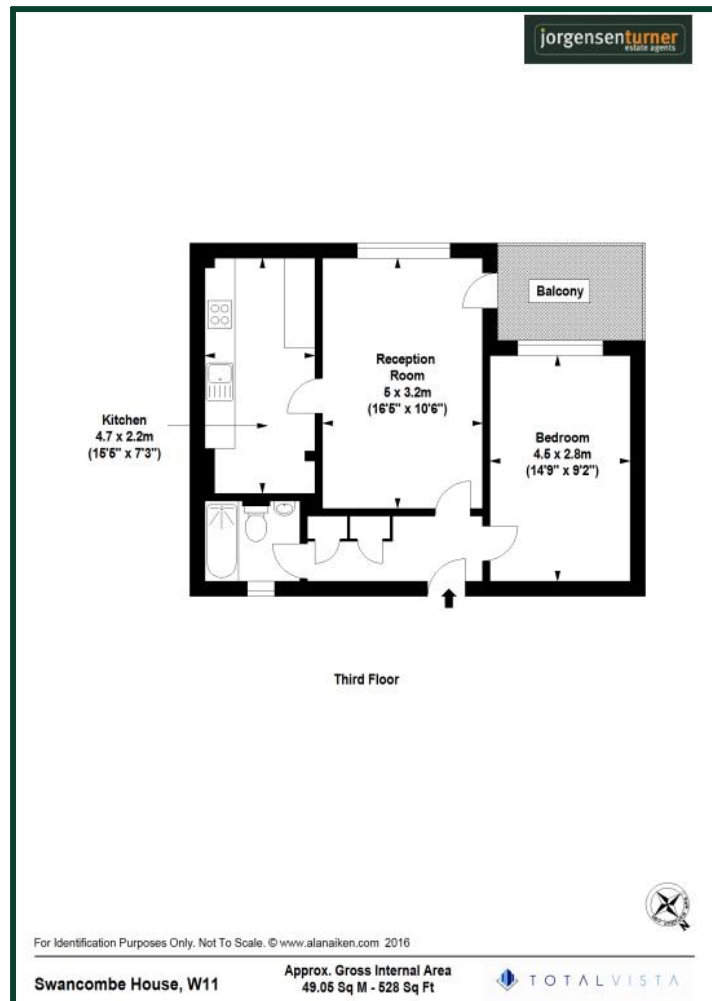


Guide Price £340,000 Leasehold

- ● CHAIN FREE
- ● PRIVATE BALCONY
- ● APPROX 528 SQ FT
- ● WALKING DISTANCE TO HOLLAND PARK AVENUE
- ● ONE DOUBLE BEDROOM
- ● FANTASTIC LOCATION
- ● CLOSE TO THE WESTFIELD CENTRE
- ● SPACIOUS RECEPTION ROOM

Situated only moments from Holland Park Avenue and Ladbroke Grove this apartment is in a prime location. The location is well served by an abundance of retail stores in the Westfield shopping centre, Holland Park Avenue and Ladbroke Grove. Transport wise the location is well served by with Latimer Road (Hammersmith and City Line, Circle Line), Shepherd's Bush and Holland Park Avenue (Central Line Tube) plus a number of excellent bus routes from Holland Park Avenue. For recreational use the lovely open spaces of Holland Park are only a short walk away.

St Ann's Road, Holland Park, London, W11



Viewing: For further information or to arrange a viewing please call us on the numbers below.

Disclaimer: These particulars are thought to be materially correct though their accuracy is not guaranteed and they do not form part of any contract. All measurements are approximate and we have not tested any fitted appliances, electrical or plumbing installation or central heating systems.

Shepherds Bush and Hammersmith Office ● Queens Park and West Hampstead Office

020 8740 8740

020 7604 4040

www.jorgensenturner.com

